



FLUFAB
SINCE 1981
PUMP SOLUTIONS MANUFACTURER



ACCESSORIES

GO WITH THE FLOW!

We are a leading manufacturer specializing in pump solutions



With a rich history dating back to 1981, we have established ourselves as a trusted and innovative player in the fluid handling industry. We specialize in designing, manufacturing, and distributing a comprehensive range of pumping systems, valves, and related equipment.

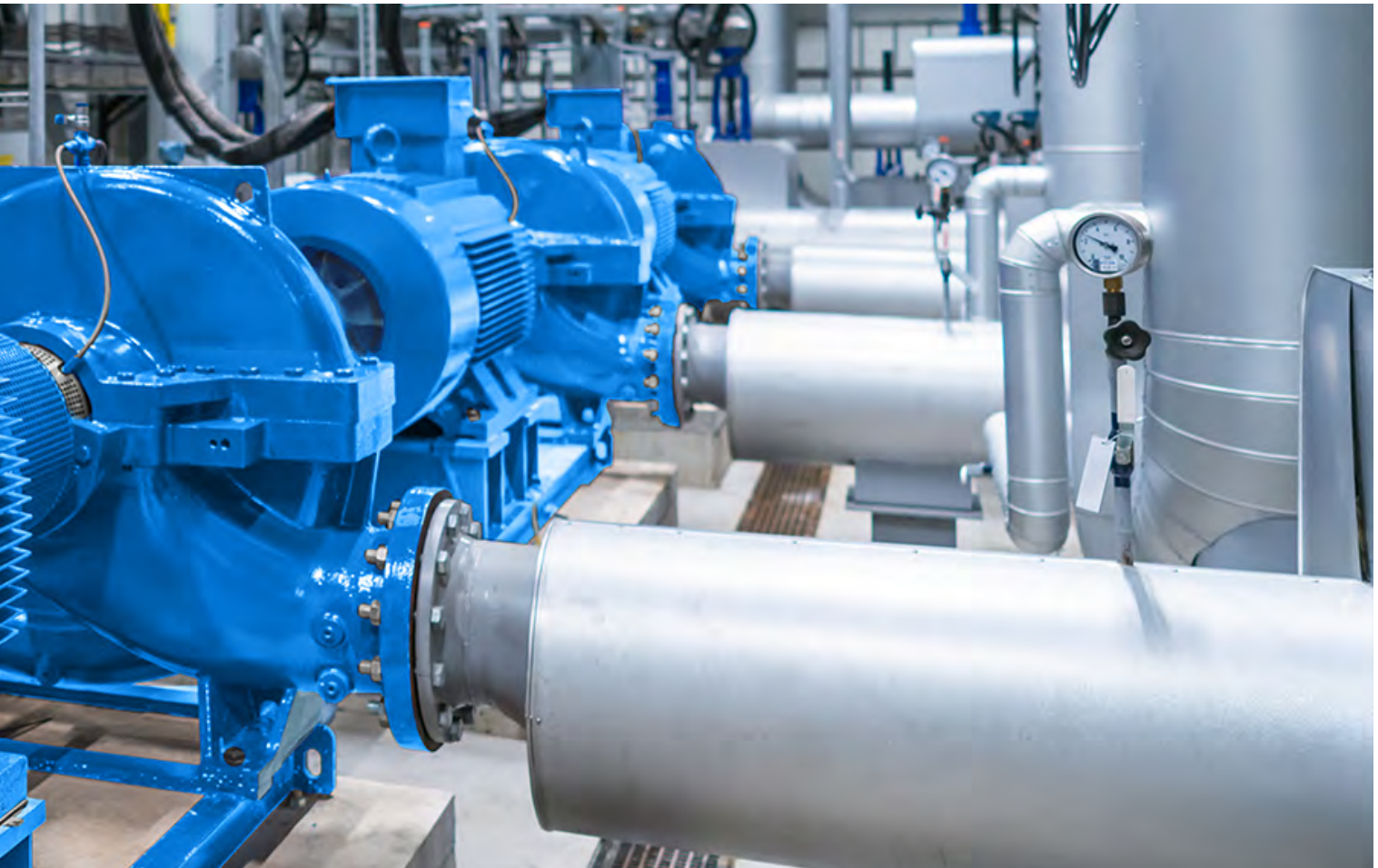
Renowned for our commitment to excellence, we have become synonymous with quality, reliability, and customer satisfaction. Our products cater to a diverse range of industries, including commercial, residential, industrial, and municipal sectors. From HVAC systems and water treatment to industrial processes and more, our solutions are designed to meet the specific demands of each application.

What sets us apart is our dedication to continuous improvement and innovation. Through substantial investments in research and development, we consistently deliver cutting-edge solutions that address evolving market needs. Our skilled team of engineers, technicians,

and professionals ensures that each product meets stringent quality standards and performs at its best.

In addition to our product offerings, we provide expert guidance, technical assistance, and personalized solutions to ensure that clients make informed decisions and achieve optimal results. With a global presence, our influence extends beyond Canada, serving customers internationally and contributing to fluid management solutions around the world.

Overall, we're enduring legacy of excellence, innovation, and customer-centric approach positions us as a respected industry leader, dedicated to shaping the future of fluid handling technology.



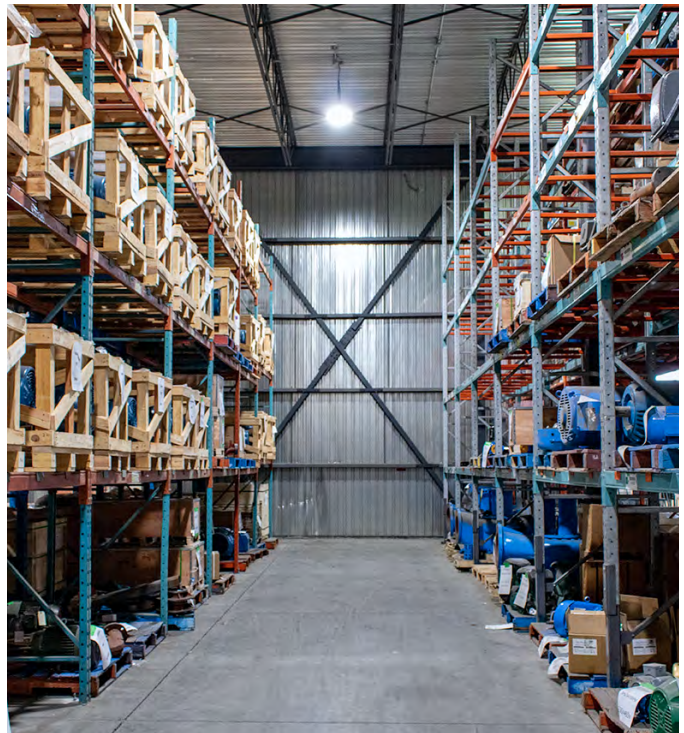
Our Products Cater To A Diverse Range Of Industries, Including Commercial, Residential, Industrial, And Municipal Sectors.

QUALITY ASSURANCE

Each product undergoes rigorous testing and quality assurance procedures before leaving the factory. This meticulous approach ensures that every unit meets the highest standards of reliability and performance.

COMPLIANCE AND CERTIFICATIONS

Our commitment to reliability is underscored by our compliance with industry standards and certifications. Our products meet or exceed stringent regulations, providing customers with the assurance of reliable performance.





ST

Flexible

Materials Steel and stainless steel

Pressure 475 PSIG at 850°F with water

Size range 1/2" to 2"

Connections Threaded



DUT

Union Arch Flexible

Materials Steel union and EPDM

Pressure 214 PSIG at 250°F with water

Size range 1/2" to 12"

Connections Threaded double



SM

Standard Flanged Connector

Materials Steel and stainless steel

Pressure 125 PSIG at 450°F with water

Size range 2" to 16"

Connections Flanged



SSP & DSP

Single & Double Arch Flexible

Materials Steel flanged and EPDM

Pressure 214 PSIG at 240°F with water

Size range 1 1/2" to 14"

Connections SSP Flanged Single
DSP Flanged Double



○ HYDRONIC, BALANCING & MULTIFUNCTION VALVE



MV

Air Valve Release

Materials	Cast iron *
Pressure	MV15 150 PSIG at 345°F MV15 300 PSIG at 400°F
Size range	3/4" **
Connections	Threaded



AA

Air Vent

Materials	Brass *
Pressure	150 PSIG at 200°F
Size range	1/8" and 1/4" **
Connections	Threaded



MFV

Multifunction Valve

Materials	Ductile iron and stainless steel disc
Pressure	150 PSIG at 225°F
Size range	2" to 18"
Connections	MFV-F: Flanged MFV-G: Grooved



Option 175 lbs W.P.
Connection Q2501 Model is standard



Pressure and/or Temperature Port

Materials	Bronze *
Pressure	1000 PSIG at 140°F
Size range	1/4" **
Connections	SS2501: Threaded SS2511: Threaded Extended



* Available in several construction materials

** Available in various sizes

Butterfly valves & wafer check valves play important roles in pump systems by regulating flow and preventing backflow. Their selection depends on factors such as the specific application, system requirements, pressure, and temperature conditions.

BUTTERFLY VALVE

Butterfly valves are used for isolating or regulating flow in various industries, such as water treatment, HVAC, chemical, and oil and gas. They are particularly suitable for large-diameter pipes.

They offer low-pressure drop, fast operation, and good flow control. They require less space and are cost-effective compared to other valve types.

WAFER CHECK VALVE

Wafer check valves are commonly used in pump systems, pipelines, and HVAC systems to prevent water hammer, maintain system efficiency, and protect equipment from backflow.

They are simple, reliable, and have minimal maintenance requirements. Wafer check valves are suitable for high-flow, low-pressure drop applications.

*Consulting with professionals in valve and pump systems can help ensure the appropriate choice for optimal system performance.



BFVZ - L

Butterfly Valve

Materials	Cast iron body, stainless steel disc, EPDM Seat *
Pressure	175 PSIG at 225°F up to 12" 150 PSIG at 250°F from 14" to 24"
Size range	2" to 24" **
Body style	Lug



LSDDB

Wafer Check Valve

Materials	Cast iron, bronze disc *
Pressure	200 PSIG at 250°F from 2" to 18" 200 lbs 200 PSIG at 250°F from 20" to 32" 150 lbs
Size range	2" to 32" **
Body style	Wafer



○ DIFFUSER & STRAINERS



ASDFF

Suction Diffuser

Materials	Cast iron body with stainless steel screen*
Pressure	175 PSIG at 250°F with water 200 PSIG at 150°F with steam
Size range	2" to 20" **
Connections	Flanged



LCTY

Y Strainer

Materials	Cast iron body with stainless steel screen*
Pressure	400 PSIG at 150°F with water 250 PSIG at 406°F with steam
Size range	1/2" to 2"
Connections	Threaded



LYF

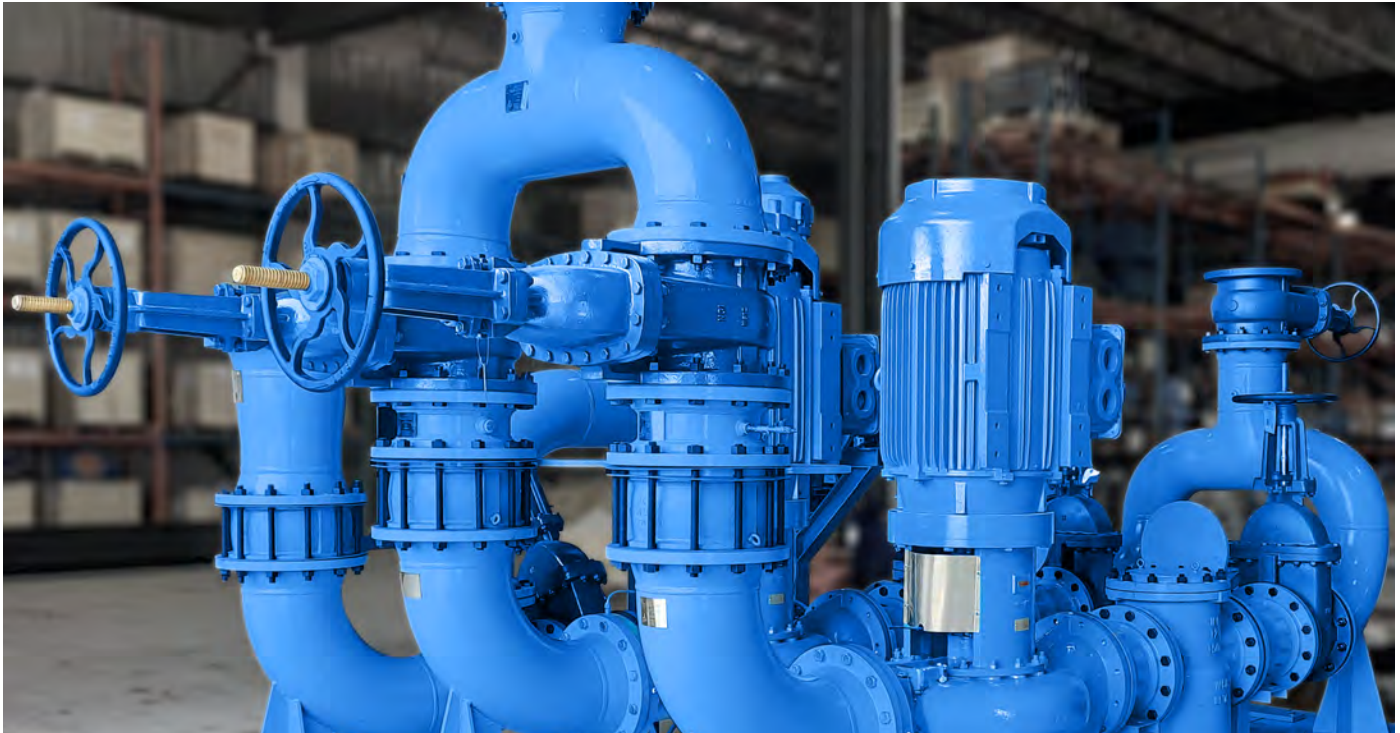
Y Strainer

Materials	Cast iron body with stainless steel screen*
Pressure	150 PSIG at 450°F with water 200 PSIG at 150°F with steam
Size range	2" to 16" **
Connections	Flanged



* Available in several construction materials
** Available in various sizes

○ OUR PACKAGES





OUR WARRANTY



5 Years Warranty On Pumps

We stand behind the quality and performance of our pumps and are pleased to offer a extensive five-year warranty. This warranty is designed to provide the customer with peace of mind, ensuring that the pump functions optimally for the duration of the warranty period.

- Coverage:** This warranty covers defects in materials and workmanship for a period of five years from the date of purchase. It applies to all components of the pump, including the motor, impeller, casing, seals, and other integral parts.
- Repair or Replacement:** In the event of a defect covered by this warranty, we will, at our discretion, either repair or replace the pump or its defective components free of charge. The decision to repair or replace will be based on the extent of the defect and feasibility.
- Exclusions:** The warranty does not cover defects or damages resulting from normal wear and tear, improper installation, misuse, neglect, unauthorized repairs or modifications, accidents, or any other factors beyond our control. It also does not cover damage caused by external factors, such as power surges, environmental conditions, or acts of nature.
- Notification and Return Process:** In the event that you encounter an issue covered by this warranty, please contact our customer support team immediately. They will provide guidance on troubleshooting steps or initiate the return process, if necessary. You will be responsible for shipping the pump or its defective parts to our designated service center at your own expense, unless otherwise agreed upon with our customer support team.
- Warranty Validation:** To validate your warranty, please retain your original purchase receipt or any other proof of purchase. This will be required when filing a warranty claim.
- Transferability:** This warranty is non-transferable and applies only to the original purchaser of the pump. It cannot be extended or transferred to subsequent owners.
- Limitations of Liability:** Our liability under this warranty is limited to the repair or replacement of the defective pump or its components as described in Section 2. We are not liable for any indirect, incidental, or consequential damages arising from the use or inability to use the pump, even if we have been advised of the possibility of such damages.
- Governing Law:** This warranty is governed by and construed in accordance with the laws of Quebec, Canada, without regard to its conflict of laws principles.

Please note that this warranty is an additional benefit provided by us and does not affect your statutory rights as a consumer. For further information or clarification on any aspect of this warranty, please contact our customer support team.



8 Years Warranty On Package

Terms & Conditions

We are confident in the quality and performance of our product and are pleased to offer a comprehensive eight-year warranty that covers both parts and labor on package. This warranty aims to ensure the customer complete satisfaction with the pump package throughout the specified warranty period.

- Coverage:** This warranty covers any defects in materials and workmanship of the items manufactured by Flo Fab on the pump package, including pump, valves, and other related Flo Fab components, for a period of eight years from date of purchase.
- Parts Replacement:** In the event of any covered defects, we will provide free Flo Fab replacement parts required to rectify the issue. This includes components that fail due to manufacturing defects or normal wear and tear under normal operating conditions.
- Labor Coverage:** In addition to parts replacement, this warranty includes the cost of labor required to perform repairs or replace faulty components. Our qualified technicians will carry out the necessary repairs or replacements without any additional cost to you. *Overtime labor is not covered by this warranty*
- Exclusions:** This warranty does not cover defects or damages resulting from improper installation (See Annexe B.2 for Installation check list and request for commissioning Engineer), misuse, negligence, unauthorized repairs or modifications, accidents, lack of proper maintenance, or any other factors beyond the manufacturer's control. It also does not cover damages caused by external factors, such as power surges, environmental conditions, or acts of nature.
- Notification and Claim Process:** If you encounter any issues covered by this warranty, please notify our support team immediately. They will provide guidance on troubleshooting steps or initiate the warranty process. To ensure a smooth resolution, please provide any relevant details, such as nature of the problem, serial number of your equipment and/or quote #.
- Warranty Validation:** To validate your warranty, completed Installation check list + Factory supervision start up is required (See Annexe C for Rates, Terms and Conditions for FIELD service & Technical support). This will be required when filing a warranty claim.
- Transferability:** This warranty is non-transferable and applies only on the original purchaser of the pump package. It cannot be extended or transferred to subsequent owners.
- Limitations of Liability:** Our liability under this warranty is limited to the repair or replacement of the defective Flo Fab components, as described in Sections 2 and 3. We are not liable for any indirect, incidental, or consequential damages arising from the use or inability to use the pump package, even if we have been advised of the possibility of such damages.
- Governing Law:** This warranty is governed by and construed in accordance with the laws of Quebec, Canada, without regards to its conflict of laws principles.

OUR BEST PROJECTS



One World Trade Center

285 Fulton Street,
New York, NY 10006, USA



St-Joseph Women Hospital

3030 W Dr Martin Luther King Jr Blvd,
Tampa, FL 33607, USA

LCOO Large Cooling Package



Brock University

1812 Sir Isaac Brock Way,
St. Catharines, ON L2S 3A1 Canada



Four Seasons Hotel

60 Yorkville Ave,
Toronto, ON M4W 0A4 Canada



Aston Martin

6600 Madison St,
Port Richey, FL 34652, USA

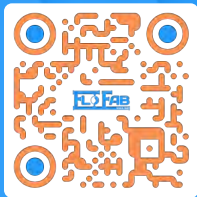
Quadruplex Booster



Houston Marriott West Loop By The Galleria

1750 West Loop South,
Houston, TX 77027, USA

GO WITH THE
FLOW • GO WITH THE
FLOW



www.flofab.com

Flo Fab

service@flofab.com

quote@flofab.com

parts@flofab.com